

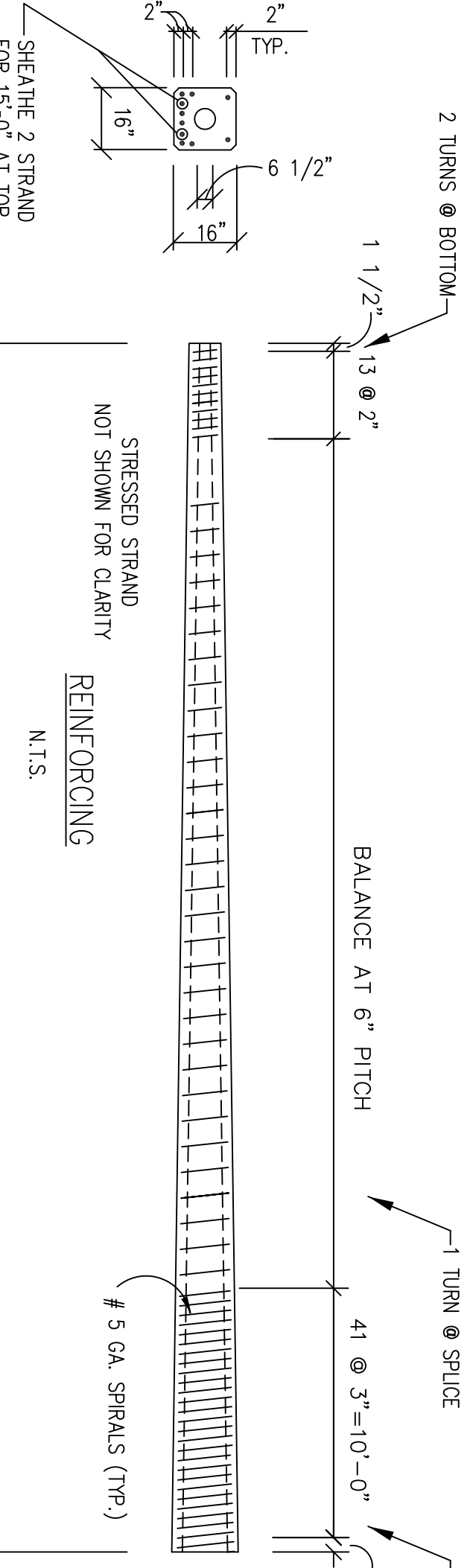


REV	DESCRIPTION	DATE	BY	CHK.

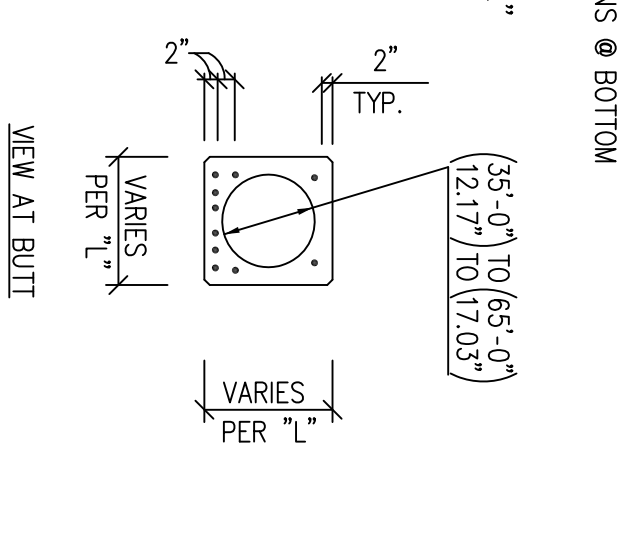
**DURA-STRESS Inc.**  
 P.O. BOX 490779 LEESBURG, FL 34749-0779  
 PHONE (352) 787-1422 FAX. (352) 787-0080  
 STRUCTURAL PRESTRESSED AND ARCHITECTURAL PRECAST CONCRETE PRODUCTS

JOB NAME:  
 LOCATION:  
 ARCHITECT:  
 ENGINEER:  
 CONTRACTOR:  
 PROJ. NO:

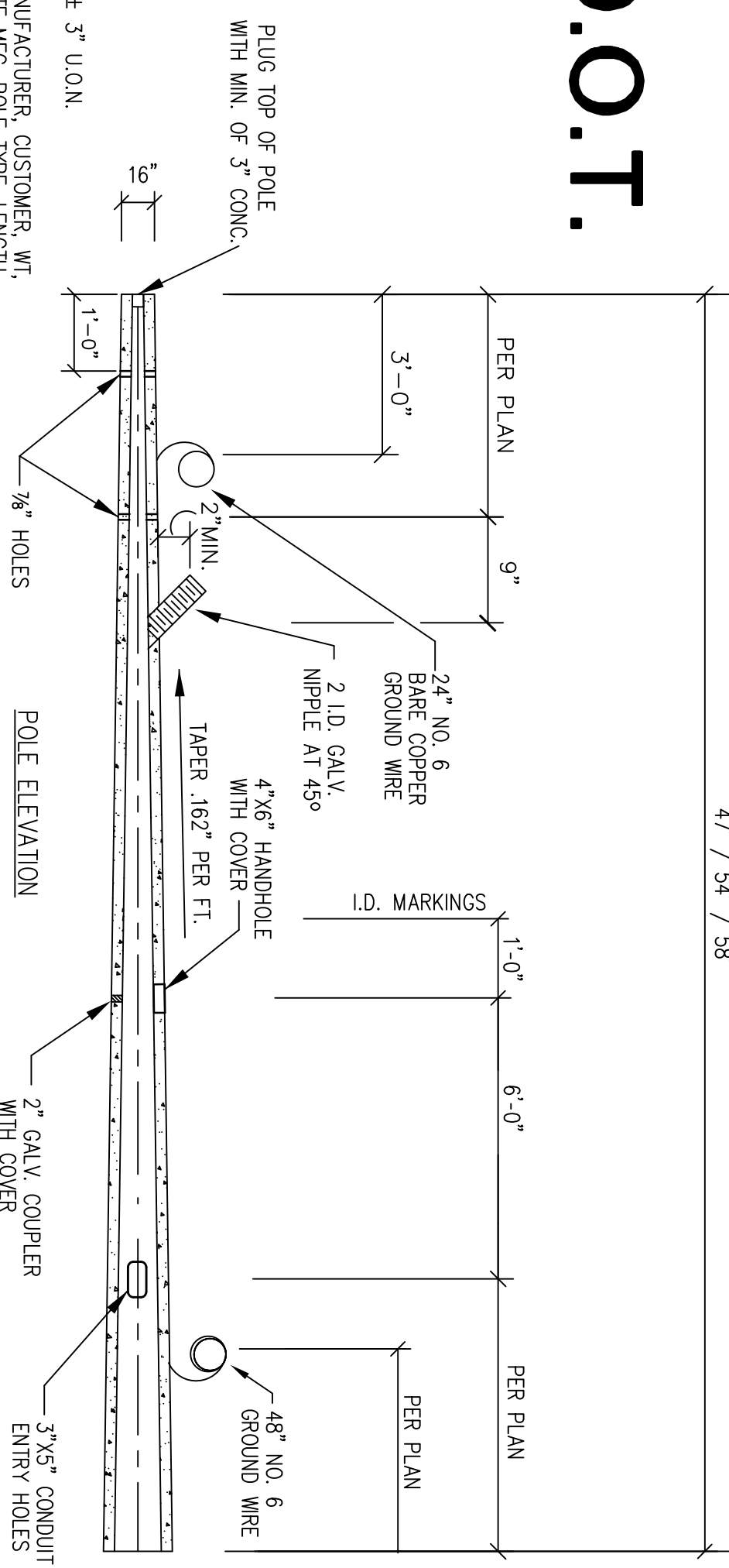
DRAWN: \_\_\_\_\_  
 CHK'D.: \_\_\_\_\_  
 APPR.: \_\_\_\_\_  
 DATE: \_\_\_\_\_  
 RELEASED: \_\_\_\_\_  
 DS JOB NO: \_\_\_\_\_  
 SH: \_\_\_\_\_ OF: \_\_\_\_\_



VIEW AT TOP



# F.D.O.T.



## NOTES

ALL EMBEDS ARE ± 3" U.O.N.  
 I.D. DETAILS = MANUFACTURER, CUSTOMER, WT, DATE MFG, POLE TYPE, LENGTH & FINANCIAL PROJECT ID  
 POLE MUST BE PICKED UP AND STORED AT TWO POINTS, APPROX. 2.5% FROM TOP AND 2.5% FROM BUTT. CAUTION: LIFTING THIS POLE WITH A SINGLE POINT PICK-UP WILL RESULT IN DAMAGE TO THE POLE.

QTY. 1

MATERIALS SPECIFICATION	
A)	F'C = 6,000 PSI (28 DAYS)
B)	F'CI = 4,000 PSI (RELEASE)
C)	Fu = 270 KSI FOR PRESTRESSING STRANDS COMPLYING WITH ASTM A416
D)	FY = 60 KSI FOR STIRRUPS AND REINFORCING BARS PER ASTM A615
E)	FY = 60 KSI SPIRAL WIRE ASTM A1064

SECT. AT 9'-0" FROM BUTT

THIS POLE SHALL MEET OR EXCEED REQUIREMENTS SET FORTH BY F.D.O.T. SPECIFICATIONS.

TYPE P-VII (STRAIN POLE)