

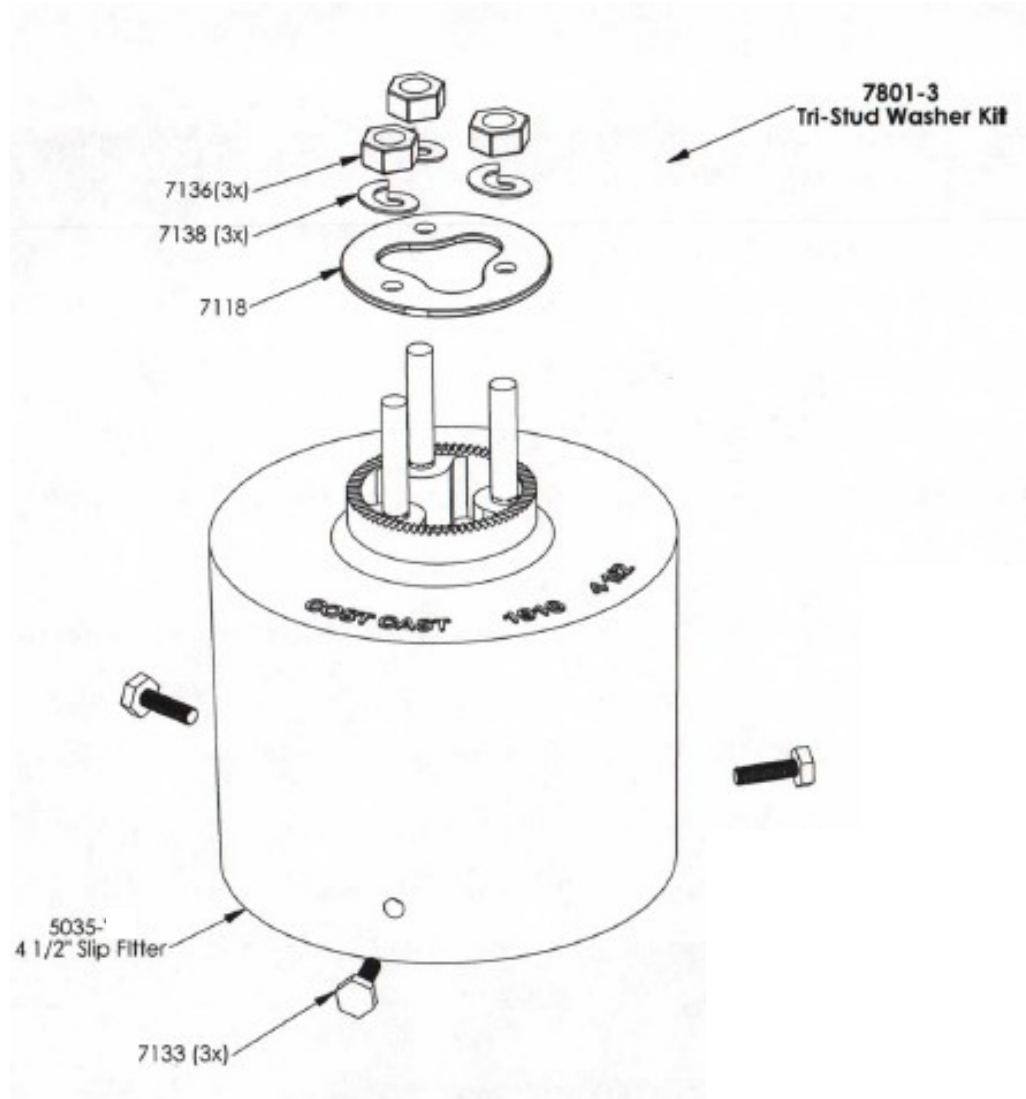


COST CAST, INC

TRAFFIC SIGNAL AND SIGN MOUNTING HARDWARE

Post Top Slip Fitter

1910-U45



- Cast From High Quality Certified Aluminum Ingot
- Certified Stainless Steel Hardware
- Weather Resistant Powder Coating Available in Multiple Colors
- Available in two sizes to fit 4" and 4 1/2" OD posts



COST CAST, INC. MANUFACTURES THE "ZERO FAILURE" TRAFFIC SIGNAL HARDWARE EXCLUSIVELY MADE IN AMERICA.