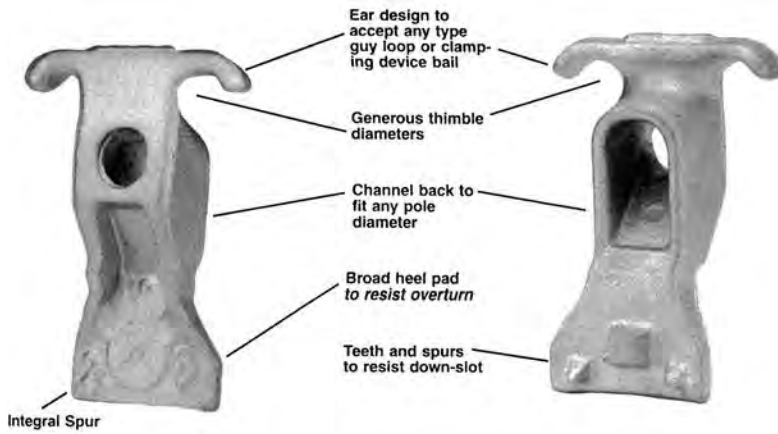




# Guy Attachments



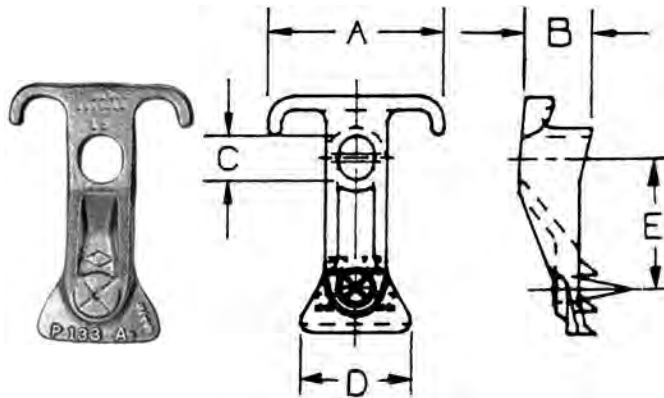
## Guy Hooks

### Features

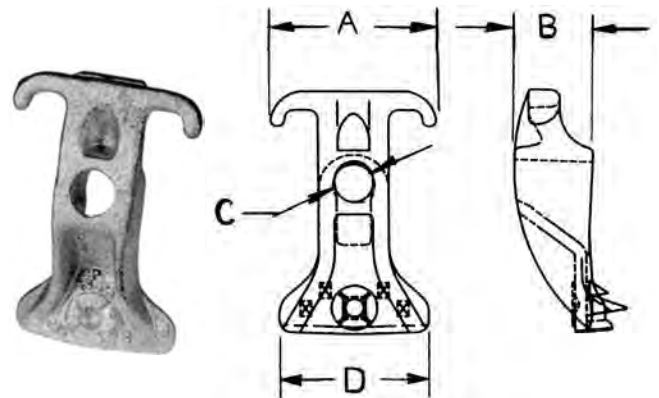
- Provide economical and efficient means of fastening guys to poles
- Well rounded wire grooves protect the strand from damage
- Wherever possible, installation should be made under the head of a machine bolt for down guy applications
- Guy hooks are not recommended to be mounted on the threaded end of a machine bolt
- Integral spur style for mounting with a through bolt only

### Material

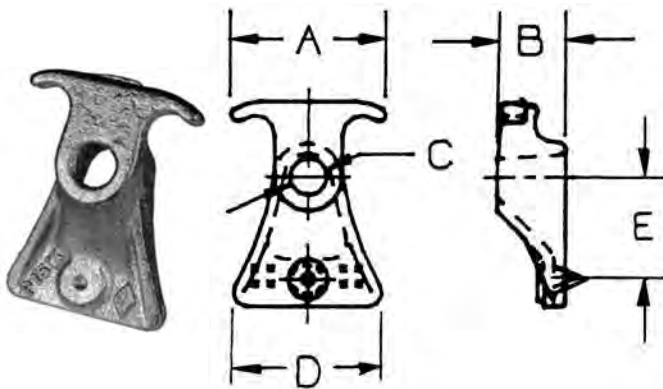
Ductile Iron - Hot Dip Galvanized



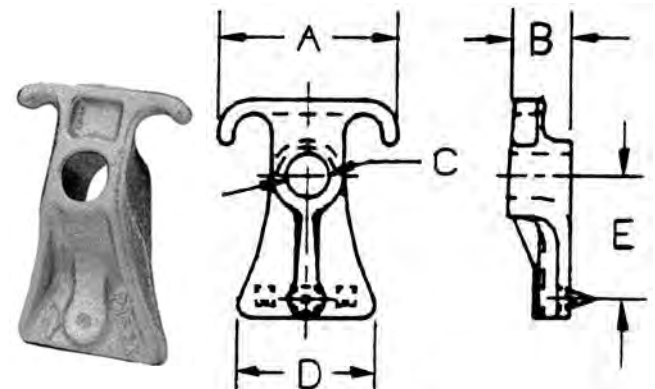
P133AX or P135AXW



P134AXW or P134BX



P151X or P152X



P157X

Catalog Number	Measurements (in)					Overall Length (in)	45°; Ultimate Str. (lbs)	Weight /100 (lbs)
	A	B	C	D	E			
P133AX	3 15/16	1 5/8	13/16 x 1	2 1/2	2 7/8	5 1/2	20050	150
P134AXW	3 3/8	1 9/16	13/16 x 7/8	2 3/8	2 5/8	4 3/4	20050	128
P134BX	3 5/8	1 5/8	13/16 x 15/16	3 1/4	2 3/4	5 3/8	20050	177
P135AXW	3 1/8	1 1/2	11/16 x 3/4	2 1/8	2 1/2	4 1/2	13550	102
P151X	2 7/8	1 1/4	11/16	2 3/4	1 7/8	3 3/4	13550	95
P152X	3 1/8	1 3/8	13/16	2 3/4	2 3/8	4 1/4	20050	108
P157X	3 5/8	1 1/4	13/16	2 3/4	2 3/8	4 1/4	20050	96